

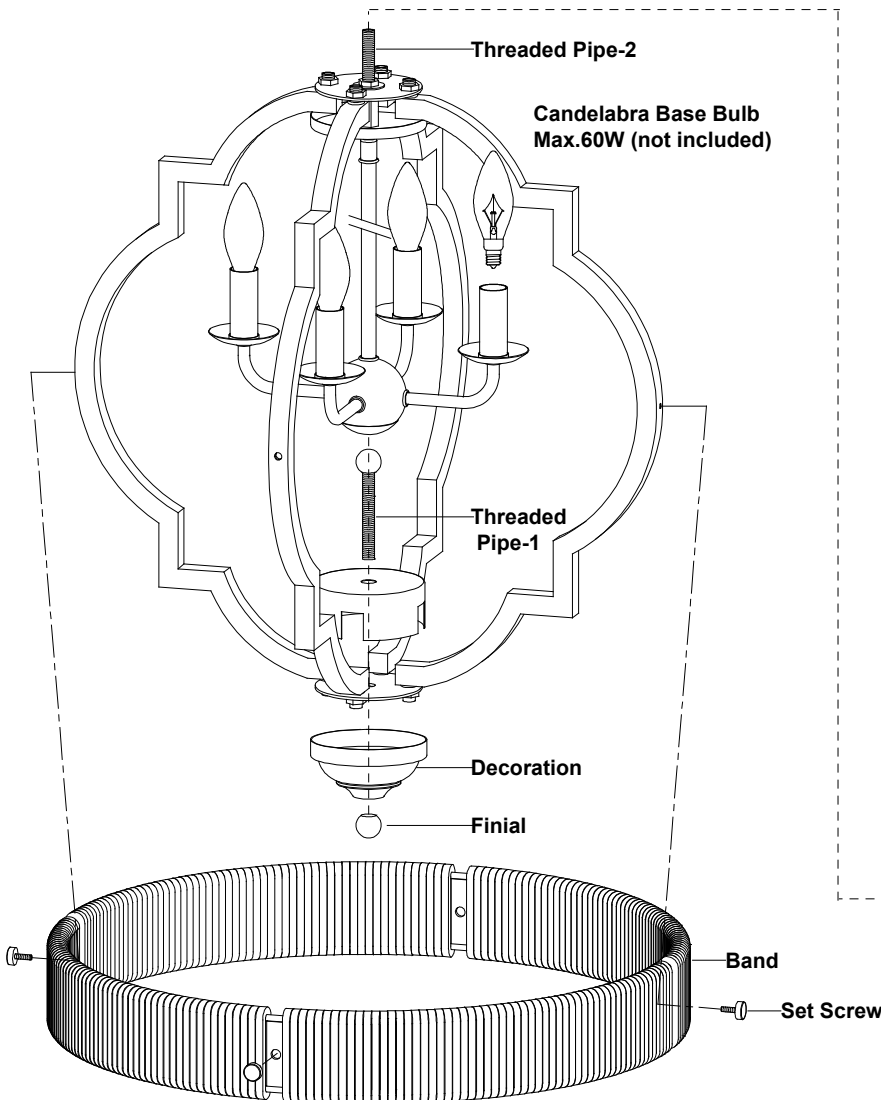
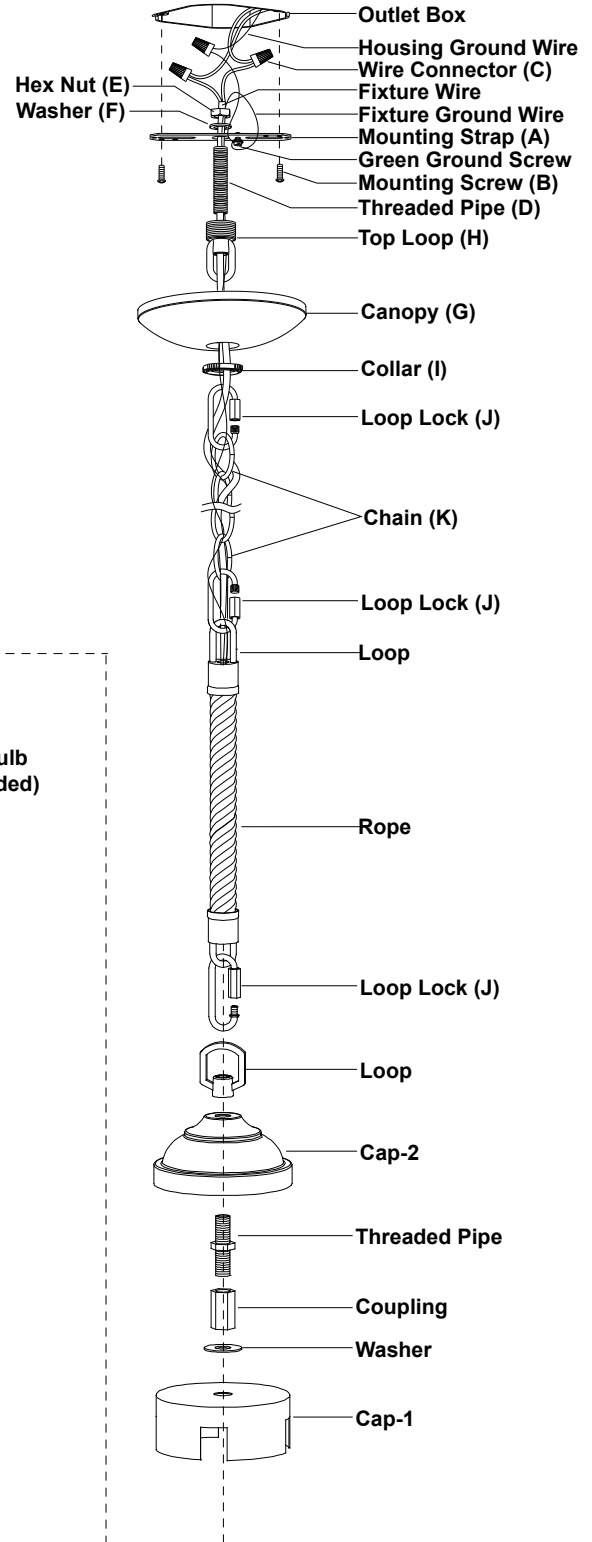
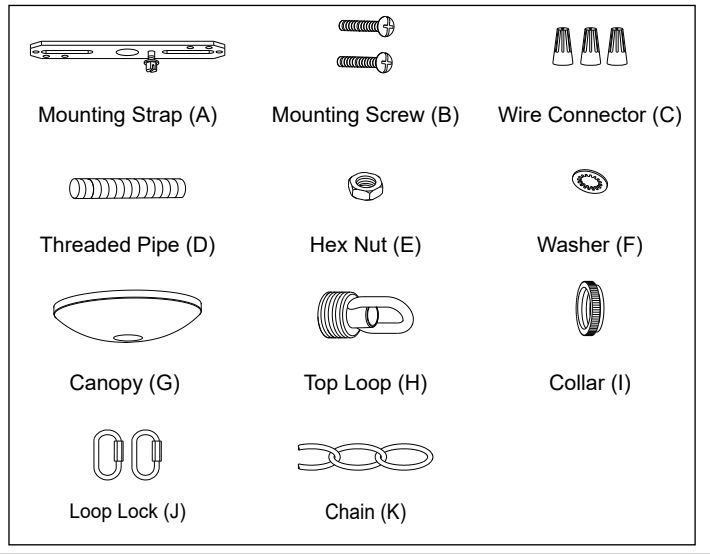
# ASSEMBLY AND INSTALLATION INSTRUCTIONS

P0308

**WARNING:** TO AVOID RISK OF ELECTRICAL SHOCK, BE SURE TO SHUT OFF POWER BEFORE INSTALLING OR SERVICING THIS FIXTURE.

**NOTE:** 1. Before installing, consult local electrical codes for wiring and grounding requirements.  
2. READ AND SAVE THESE INSTRUCTIONS.

## Hardware Package(inculded):



## Installation Steps

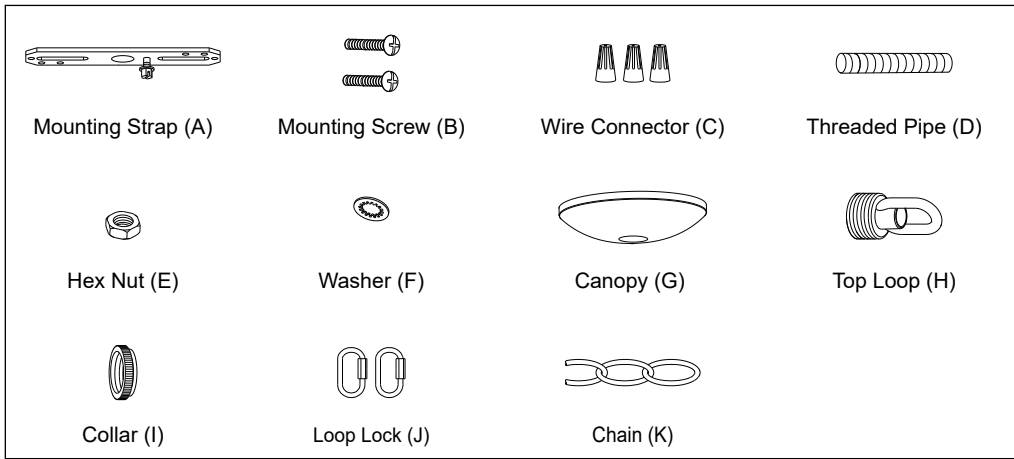
Turn off the power at fuse or circuit box.

1. Attach threaded pipe (D) to the mounting strap (A), then secure it with a washer (F) and hex nut (E).
2. Attach the mounting strap (A) to the outlet box using two mounting screws (B).
3. Adjust the arms of the fixture according to the picture on the package.  
**Important:**
  - a. The arms should be positioned with equal distances between them.
  - b. The arms should be fixed securely.
4. Attach the cap-1 to the fixture using coupling, then rotary threaded pipe-2 into the coupling and attach the cap-2 by loop.
5. Attach the rope band to fixture ,thread a set screw through the hole of band and then repeat to fix band to arms.
6. Attach the threaded pipe-1 to fixture ,secure it with decoration and top finial.
7. Connect the chain :
  - Determine length of chain needed to achieve desired fixture height (To remove excess chain section use plier to bend link open.)
  - weave the fixture wires through the chain ,collar and canopy.
8. Connect the rope with the loop using loop lock (J).
9. Connect one end of the chain(K)with the rope using another loop lock(J)
10. Connect the other end of the chain (K) with the top loop (H) using another loop lock (J).
11. Thread the fixture wire and fixture ground wire through the top loop (H), threaded pipe (D) and mounting strap (A).
12. Pull out the outlet wires and house ground wire from the outlet box. Make wire connections using the wire connectors (C):
  - The smooth wire (marked) from the fixture to the black wire from the power source.
  - The ridged wire (unmarked) from the fixture to the white wire from the power source.
  - Attach the fixture ground wire to the mounting strap (A) with the green ground screw.
  - Then connect it to the house ground wire with a wire connector (C).
  - Carefully put the wires back into the outlet box.
13. Attach the canopy (G) to the mounting strap (A) by inserting the top loop (H), then secure it with the collar (I).
14. Install bulbs (not included). See relamping label at socket area or packaging for maximum wattage allowed .

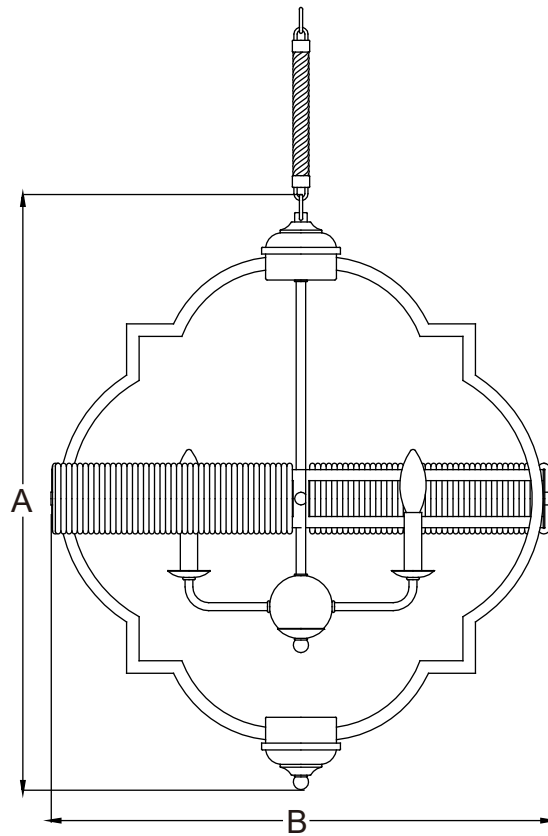
Turn on the power at fuse or circuit box.

The following parts are available for re-order if damaged or missing.

### Spare Parts List:



←  
Mounting Hardware  
6169MM(1 SET)



**A: 24-3/4"**  
**B: 20"**